



We STRIVE TO EMPOWER THE DREAMERS.

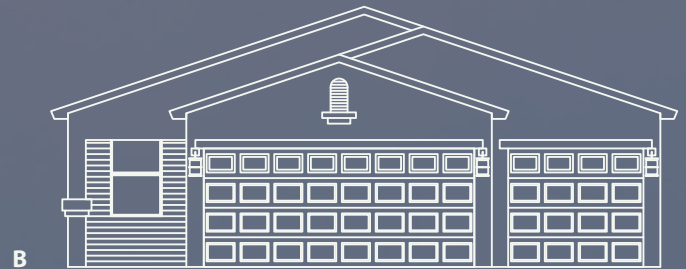
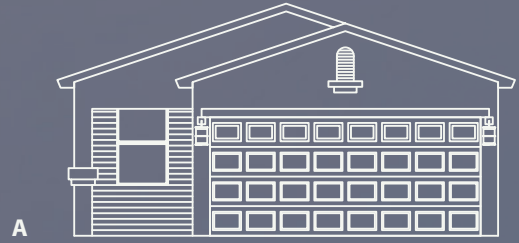
- FULL AMANA APPLIANCE PACKAGE (OPTIONAL WASHER AND DRYER)
- LUXURY VINYL TILE IN ALL WET AREAS WITH PLUSH CARPET IN REMAINING AREAS
- GRANITE COUNTERTOPS IN KITCHEN + BATH
- 2-10 LIMITED 10-YEAR WARRANTY + EXCLUSIVE 1-YEAR BUILDER WARRANTY
- 30" FLAT PANEL BIRCH CABINETS IN KITCHEN WITH CROWN MOLDING AND MATCHING BIRCH CABINETS IN BATHS
- SEER 14 FORCED AIR REFRIGERATED A/C SYSTEM
- ENERGY EFFICIENT GAS FURNACE
- COVERED PATIO INCLUDED PER PLAN
- LED LIGHTING
- FRONT YARD LANDSCAPING WITH AUTOMATIC IRRIGATION SYSTEM AND REAR STUB OUT
- 2 COAT ACRYLIC STUCCO WITH SINGLE COLOR PACKAGE
- R-38 BLOWN AND NETTED INSULATION AT CEILING
- R-19 BATT INSULATION IN EXTERIOR WALLS

OWN YOUR FUTURE.

WE'RE **DISRUPTING** THE
 HOMEBUILDING INDUSTRY TO **EMPOWER**
 THE INDIVIDUAL BY PROVIDING THE
OPPORTUNITY FOR HOMEOWNERSHIP
 WITH **GUIDANCE** THE WHOLE WAY.

THE GARNET

- 1344 SQ. FEET
- 3 BEDROOM
- 2 BATHROOM
- 2 CAR GARAGE (OPTIONAL 3)
- 1 STORY



WE CREATE INNOVATIVE
WAYS TO LIVE FOR THE
PRESENT AND FUTURE
BY REVOLUTIONIZING
THE HOMEBUILDING
EXPERIENCE.



Renderings are conceptions and may vary from actual home. Square footage is approximate. Minor changes may be made at the discretion of the builder. Please contact your Sales Professional for details.